

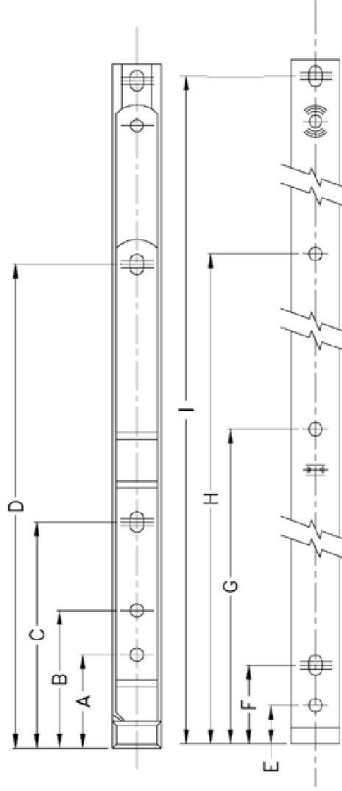
Technical Data

Application	Side & top hung
Stack Height (mm)	13, 17
Size (inches)	8, 10, 12, 16, 20, 24
Max. Sash Weight (kg)	Top hung = 50, side hung = 24

Material Specification:

Stainless steel	Type 430 to BS EN 10088-2 (BS 1449) or type 304 to BS EN 10259.1.4.016
End cap	Acetal / tenac 4520
Slider	Acetal / tenac 4010
Box Quantity	Top hung 8" & 10" = 50, side hung 12" & 16" = 25, top hung 12" to 24" = 25

Technical Drawings



Fixing Hole Details

Description	A (mm)	B (mm)	C (mm)	D (mm)	E (mm)	F (mm)	G (mm)	H (mm)	I (mm)
Top Hung 8"	36.2	53.0	-	150.8	15.5	30.5	159.5	-	203.9
Top Hung 10"	36.2	53.0	86.7	184.7	15.5	30.5	181.9	-	254.8
Top Hung 12"	36.2	53.0	112.1	210.1	15.5	30.5	226.2	-	306.0
Top Hung 16"	36.2	53.0	166.4	260.4	15.5	30.5	226.2	-	407.2
Top Hung 20"	36.2	53.0	217.2	311.2	15.5	30.5	217.8	-	508.7
Top Hung 24"	36.2	53.0	268.0	362.0	15.5	30.5	217.5	405.3	610.4
Side Hung 12"	32.6	-	114.8	212.7	279.3	15.5	30.5	226.6	305.7
Side Hung 16"	36.2	53.0	165.5	314.3	380.9	15.5	30.5	226.2	407.0

Ideal Sinidex Friction Stay

The Ideal Sinidex friction stay provides quality, smooth operation, reliability and strength whilst offering excellent value-for-money. Our Ideal Sinidex friction stay offers improved security and weathersealing through the use of a nylon, reduced friction, end cap and has been designed to offer smooth closure and high performance for window applications of all sizes.

- Manufactured from high grade Austenitic (304) and Ferritic (430) stainless steel
- Available in 8", 10", 12", 16", 20" and 24" top hung applications
- Available in 12" or 16" for side hung applications
- Secured By Design licensed product
- BBA approved product



Recommended Maximum Sash

Description	Size (")	Width (mm)	Height (mm)	Weight (kg)	Opening (°)
Top Hung	8	1200	300	10	62°
Top Hung	10	1200	450	16	56°
Top Hung	12	1200	600	21	64°
Top Hung	16	1200	750	22	51°
Top Hung	20	1200	900	24	42°
Top Hung	24	1200	1500	50	38°
Side Hung	12	650	1250	20	64°
Side Hung	16	700	1300	24	52°

Part Numbers

Description	Size (")	13mm Stack Height	17mm Stack Height
Top Hung	8	022908	022958
Top Hung	10	022910	022960
Top Hung	12	022912	022962
Top Hung	16	022916	022966
Top Hung	20	022920	022970
Top Hung	24	022924	022974
Side Hung	12	022930	022980
Side Hung	16	022932	022982

Guarantees & Accreditations

Mechanical Guarantee	10 years	BBA Approved	Yes
Labour Guarantee	2 years	SBD Product	Yes



Report No. 2161A